



**REVERSOMATIC**  
MANUFACTURING LIMITED

**3-Stage, Whole-house  
HEPA Filtration System**  
RAC-200/400

*Breathe easier...  
Breathe clean,  
healthy air.*

***You filter your  
drinking water...why wouldn't you  
filter the air you breathe?***

Our 3-stage HEPA filtration system removes dust, dirt, allergens and pollutants that can cause respiratory illness (particularly in young children and seniors) :

Removes 99.97% of allergens and spores.



- asthma
- common cold and flu
- other health issues  
that may show up  
later in life





**REVERSOMATIC**  
MANUFACTURING LIMITED

## 3-Stage, Whole-house HEPA Filtration System RAC-200/400



### Features and Benefits:

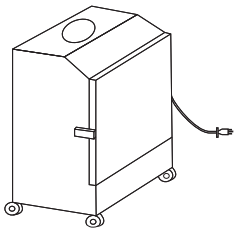
- Pleated pre-filter captures larger particles.
- Activated carbon filter removes household odors, e.g. cooking, pets, household chemicals, smoke and VOCs.
- HEPA media filter - 99.97% effective. Captures much smaller particulate down to 0.3  $\mu$  including mold spores, fungi, bacteria, viruses and more.
- Insulated cabinet reduces noise.
- Variable speed switch controls motor speed.
- Can be installed duct mounted, wall hung, collar mounted or free standing. Comes with duct and collar knock outs.
- Hassel-free front panel allows for ease off access to change filters.
- Powder-coated paint.
- Strong, durable steel construction.

### Optional Accessories:

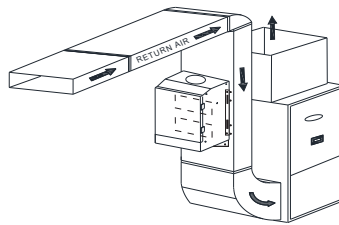
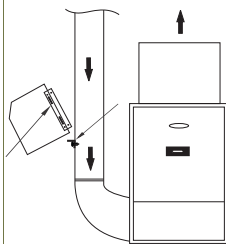
- Replacement Filter – HEPA Filter (Part # 500007)  
15 - 3/4" x 11 - 1/2" x 2"
  - Pleated Pre Filter with activated carbon (part #500008) 15 - 3/4" x 11 - 1/2" x 2"
- Polypropylene caster wheels (for portable unit) (part #500009)

### INSTALLATION OPTIONS

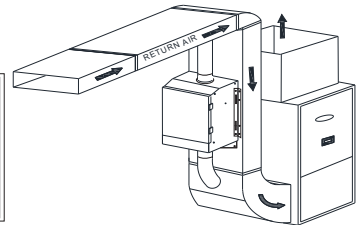
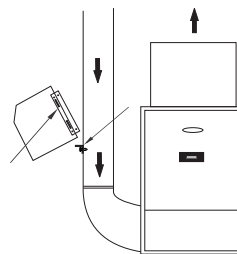
#### Portable Free Standing



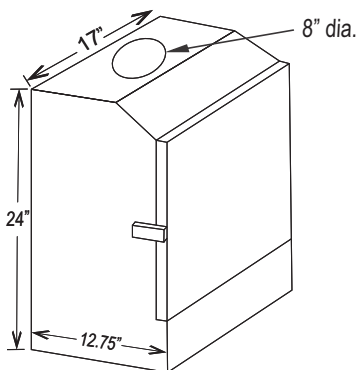
#### Duct Mounted



#### Collar Mounted



### UNIT DIMENSIONS



#### RAC-200/400

Height 24"

Width 17"

Depth 12.75"

### PERFORMANCE

#### RAC-200/400

- RAC-200 - 230 CFM/2.0 Sones Rating
- RAC-400 - 380 CFM/2.5 Sones Rating
- Powerful PSC motor with permanently lubricated ball bearings for long life and vibration-free operation.
- Pre-wired 3' long cord with three prong plug.
- Voltage: 115 V/1/60 Hz
- Power consumption: 120 watts (RAC-200), 300 watts (RAC-400)
- Weight (approximate): 30.5 lbs. (RAC-200), 35 lbs. (RAC-400)

**Reversomatic Manufacturing Ltd.**

790 Rowntree Dairy Road, Woodbridge, ON Canada L4L 5V3 • Tel: 905-851-6701 • Fax: 905-851-8376  
[www.reversomatic.com](http://www.reversomatic.com) • [info@reversomatic.com](mailto:info@reversomatic.com)





**REVERSOMATIC**  
MANUFACTURING LIMITED

**Shop Drawing**

## HEPA Air Cleaner

**RAC-200/400**

**DUCT MOUNTED HEPA FILTRATION SYSTEM TO KEEP YOUR FAMILY HEALTHY  
DO NOT LET INDOOR AIR POLLUTANTS AFFECT YOUR HOME**

### Features:

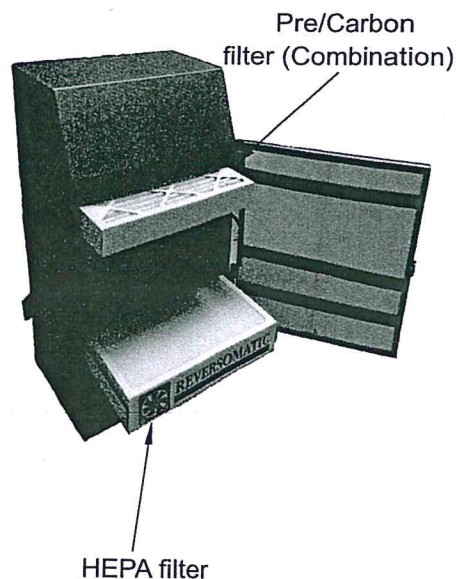
- Power Ratings: 115VAC/1/60Hz, 1.30 Amp., (RAC-200), 2.75 Amp. (RAC-400).
- The air cleaner is powered by a high-performance and backward inclined PSC motor to ensure a consistent and maintenance free life cycle.
- The positioning of the motor between the pre-filter and the HEPA filter creates a **dual-barrier system**, ensuring that the air cleaner will perform consistently at a comfortable level.
- The air cleaner is also lined with insulation that further contributes to the low sound level of the unit.
- The **modular** design makes removing the filters easy and hassle-free with an accessible front door and sliding panels.
- A two filter system captures and removes the pollutants and allergens from your home. The **pre-filter** collects the largest particles while the **carbon filter** absorbs odors and gases. The **HEPA filter** captures the tiniest particles.
- HEPA filter media - 99.97% effective down to 0.3µ.  
The filter will capture up to 99.97% of particles larger than 0.3µ - a human hair is 100µ.
- On average, the pre-filter and carbon filter should be replaced every 3 to 6 months whereas the HEPA filter should be replaced every 2 to 5 years.

### Accessories (Optional):

- Replacement Filter Kit
- UV Light
- Polypropylene caster wheels (for stand alone unit)

### Performance Features:

|              |  |
|--------------|--|
| Dimension    | Air Cleaner - Height: 24" Width: 12.75" Length: 17"<br>Pre-filter - Height: 2" Width: 11.5" Length: 15.75"<br>HEPA filter - Height: 2.5" Width: 11.5" Length: 15.75" |
| Motor        | Powerful PSC motor with external motorized impeller with permanently lubricated ball bearings for long life and vibration-free operation                             |
| Electrical   | Pre-wired 3-feet long cord c/w three prong plug.<br><b>Voltage:</b> 115V/ 1 /60Hz<br><b>Power Consumption:</b> 120 Watts (RAC-200), 300 Watts (RAC-400)              |
| Installation | Easy to install on existing duct work of forced air furnace or air handler. Mounts in any position.<br>Can also be used as an independent system (stand alone)       |
| Air flow     | RAC-200: 200 CFM<br>RAC-400: 400 CFM   |
| Weight       | App. 30.5 lbs (RAC-200)<br>App. 35 lbs (RAC-400)   |



**HVI**  
MEMBER™

**Reversomatic Manufacturing Ltd.**

790 Rowntree Dairy Road, Woodbridge, ON Canada L4L 5V3 • Tel: 905-851-6701 • Fax: 905-851-8376  
www.reversomatic.com • info@reversomatic.com

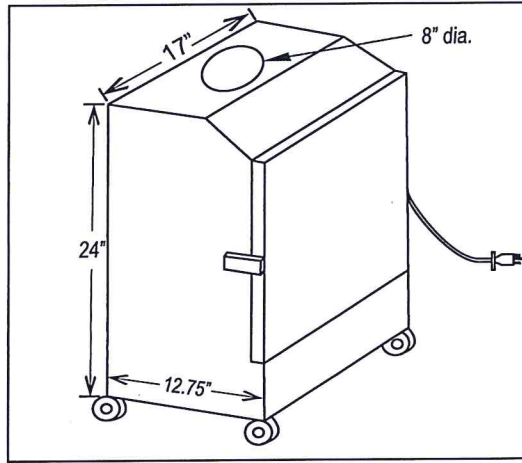
# HEPA Air Cleaner

**RAC-200/400**

## Performance Data

| External Static Pressure |          | Net Supply Air Flow (CFM) |         |
|--------------------------|----------|---------------------------|---------|
| Pa                       | in. W.C. | RAC 200                   | RAC 400 |
| 25                       | 0.1      | 197                       | 376     |
| 50                       | 0.2      | 178                       | 368     |
| 75                       | 0.3      | 164                       | 353     |
| 100                      | 0.4      | 157                       | 345     |
| 125                      | 0.5      | 138                       | 337     |
| 150                      | 0.6      | 120                       | 329     |
| 175                      | 0.7      | 108                       | 322     |
| 200                      | 0.8      | 92                        | 314     |
| 225                      | 0.9      | 79                        | 306     |
| 250                      | 1.0      | 63                        | 297     |

## Installation Options:

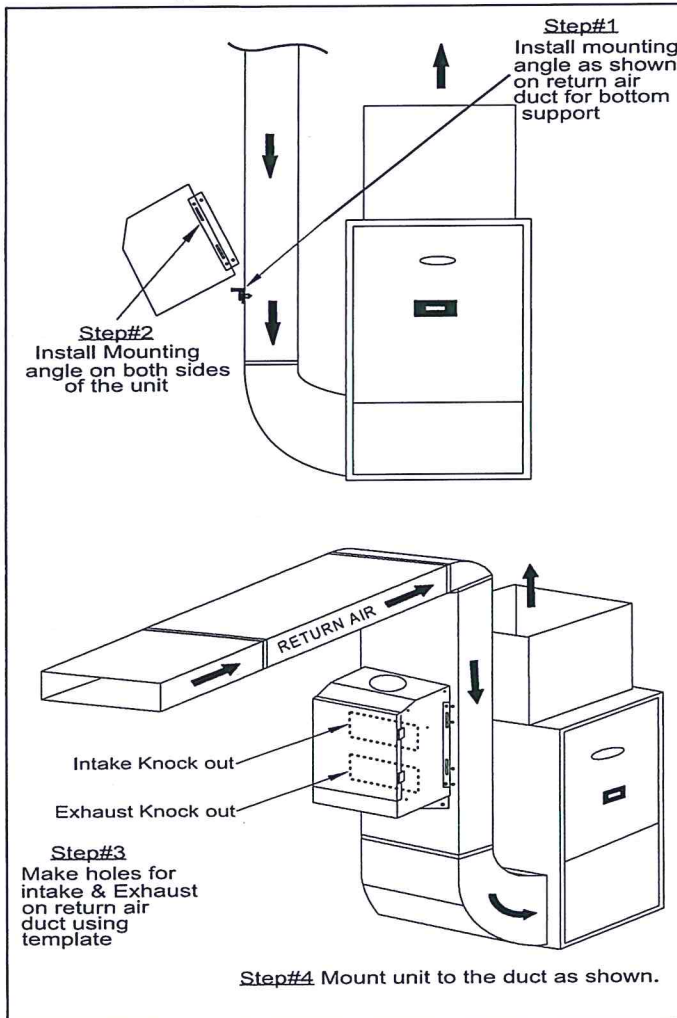


#1 Free Standing (Stand alone)

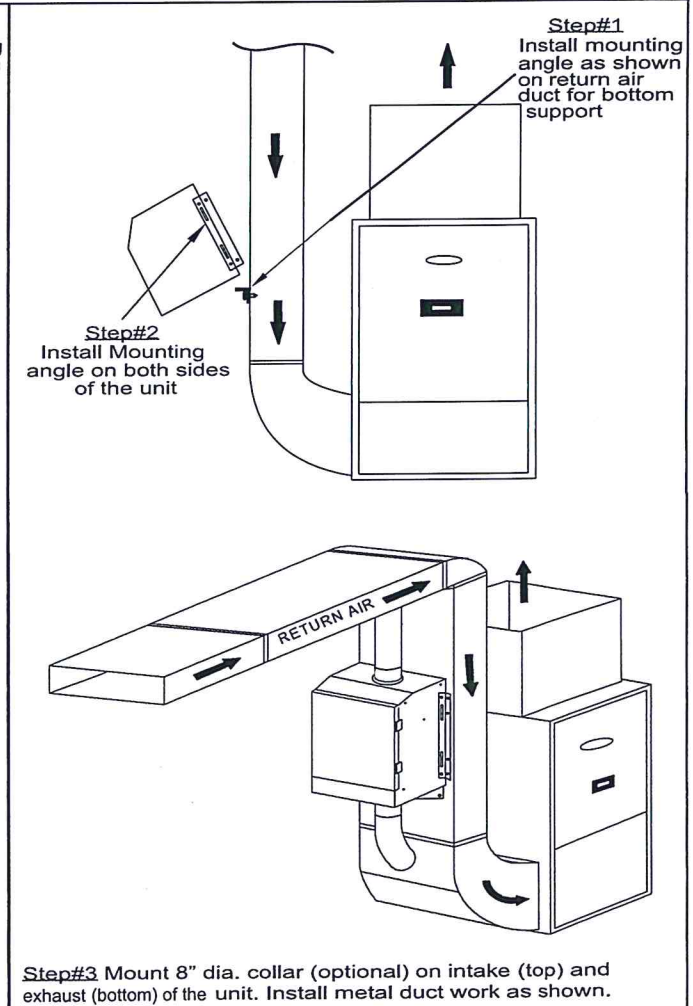
## Sound Data:

| RAC-200            | RAC-400            |
|--------------------|--------------------|
| <b>2.0</b>         | <b>2.5</b>         |
| at Operating Speed | at Operating Speed |

### Installation Type# A



### Installation Type# B



|             |                 |                    |           |             |
|-------------|-----------------|--------------------|-----------|-------------|
| Contractor: |                 | <b>RAC-200/400</b> |           |             |
| Architect:  | Job:            | Date               | Supersede | Drawing No. |
| Engineer:   | Date Submitted: | 02/22/17           |           |             |

**Reversomatic Manufacturing Ltd.**

790 Rowntree Dairy Road, Woodbridge, ON Canada L4L 5V3 • Tel: 905-851-6701 • Fax: 905-851-8376  
www.reversomatic.com • info@reversomatic.com