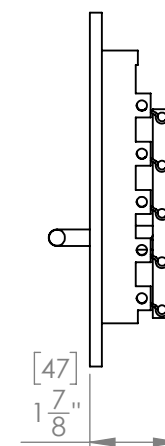


CLOSED POSITION



OPEN POSITION

FOR REFERENCE ONLY

REVISION	DESCRIPTION :
01	RG0291 - 10in x 6in Painted Steel, Multi-Shutter

PROPRIETARY AND CONFIDENTIAL
THE INFORMATION CONTAINED IN THIS DRAWING IS THE SOLE PROPERTY OF Imperial Manufacturing Group. ANY REPRODUCTION IN PART OR AS A WHOLE WITHOUT THE WRITTEN PERMISSION OF Imperial Manufacturing Group IS PROHIBITED.

	NAME	DATE	TITLE:	
DRAWN	ER	2018-06-06	RG0291 - 10in x 6in Painted Steel, Multi-Shutter	
UNLESS OTHERWISE SPECIFIED: DIMENSIONS ARE IN MM TOLERANCES: +/-1.588mm +/- 1/16"			MATERIAL: Steel	FINISH: Painted
SIZE A			PART NO. RG0291	
SCALE: 1:4		DO NOT SCALE DRAWING		SHEET 1 OF 1

