

Fig. 1



Fig. 2

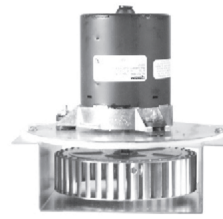


Fig. 3

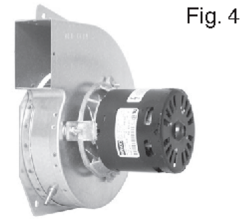


Fig. 4



Fig. 5



Fig. 6



Fig. 7



Fig. 8

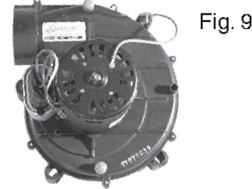


Fig. 9

Clare (cont. from previous page...)

Part #	HP	Volts	Amps	Type	RPM	Rot.	Body	Frame	Bearing	Cap	Shaft	Cross	Fig
FB-RFB130	1/18	115	0.70	PSC	1/3450	CCW	5.0"	3.3"	Ball	4/370	-	Consolidated CHU 90-3, 108-5, 126-5 High Eff. Res: 4246101, Fasco 7062-9064	1
FM-RFM12	1/15	115	2.0	SP	1/3100	CCW	4.4"	3.3"	Sleeve	-	1.3"x5/16"	High Eff. Res: Clare V17, M046	2
FB-RFB17	1/15	120	2.0	SP	1/3000	CCW	6.9"	3.3"	Sleeve	-	-	Mid Eff. MEG Series, Res: Clare V17, Fasco 7130-0029	3

Coleman

Part #	HP	Volts	Amps	Type	RPM	Rot.	Body	Frame	Bearing	Cap	Shaft	Cross	Fig
FB-RFB156	1/50	115	1.1	SP	1/3000	CCW	5.6"	3.3"	Sleeve	-	-	Roof Top Com: Evcon 2702-321, 7021-9404	4
FB-RFB391	1/25	115	1.30	SP	1/3200	CCW	6.0"	3.3"	Sleeve	-	-	Dornback High Eff. G90 Res: 2940391P, UE94456, Fasco 7021-6759, 7021-5478	5

Dundas Foundry

Part #	HP	Volts	Amps	Type	RPM	Rot.	Body	Frame	Bearing	Cap	Shaft	Cross	Fig
FB-RFB500	1/32	115	1.1	SP	1/2860	CCW	5.5"	3.3"	Sleeve	-	-	Greenhouse Blower, Com: Fasco 50752-D500, Dundas Foundry Cooler Blower Fan, UE9492	6

Ducane

Part #	HP	Volts	Amps	Type	RPM	Rot.	Body	Frame	Bearing	Cap	Shaft	Cross	Fig
FB-RFB936	1/60	115	1.0	SP	1/2800	CCW	6.0"	3.3"	Sleeve	-	-	Ducane, Lennox Air-Flo High Eff. (NEW) MPG50B3, 75B3, B4, 100B4, 100B5, 125B5 Res: 20093601, 20282002	7
FB-RFB282	1/16	115	1.1	SP	1/3000	CCW	6.0"	3.3"	Sleeve	-	-	Ducane, Lennox Air-Flo High Eff. (New) CMPB50U2 - 50U3, 75U2 - 75U3 Res: 20282001, 20282002, R20434401, 92L14-01, 92L14, 7021-0948	8
FB-RFB540	1/10	115	0.7	PSC	1/3450	CCW	6.5"	3.3"	Ball	4/370	-	Ducane, Lennox Air-Flo High Efficiency (Old) CMA50U2A, 75U2A, 100U2A, 125U2A Res: 20054001, 20000101	9