

Single Shaft - 208/230 Volts - Totally Enclosed

Motors continued from previous

Sleeve & Ball Bearing - PSC

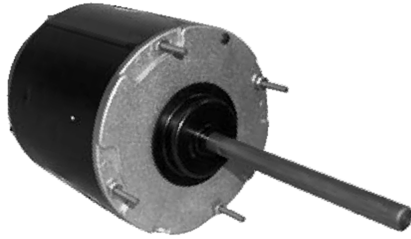


Fig.1

R22175 R32556
R22015 R32557
R31703 R22168
R31705 R22245
R22345 CF-3733
R22016 CF-813
R22187 CF-3734
R22460 CF-3735
R31706

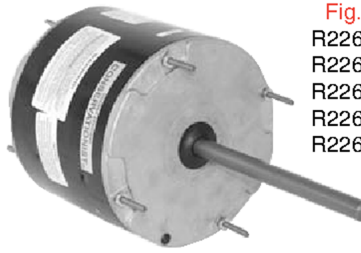


Fig.2

R22601
R22602
R22603
R22604
R22605



Fig.3

R22140

Part #	HP	Amps	Spd/RPM	Rot.	Body	Shaft	Cap	Bearing	Comment	Fig.
R22601	1/3	1.90	2/825	REV.	4.80	5.0"x1/2"	10/370	BALL	MULTI HP 1/3 - 16	2
R22605	1/3	2.80	2/1075	REV.	4.80	6.0"x1/2"	7.5/370	BALL	MULTI HP 1/3 - 1/6	2
CF-3733	1/3	2.80	1/1075	REV.	5.15	6.5"x1/2"	7.5/370	BALL	FSE1036S, SV1, FE1036S, SB, WG840729, 1861, 1877, D908, D7908, 3733, 3729, E222, X413, 175, R31703	1
CF-813	1/3	1.90	1/825	REV.	5.00	6.5"x1/2"	7.5/370	BALL	FSE1038S, FE1038S, F1038, 1875, D936, D796, 791, D3026, X451, X086, 475, 740, 467, R22345	1
R22345	1/3	2.40	1/825	REV.PLUG	5.50	6.0"x1/2"	7.5/370	SLEEVE	GENERAL REPLACEMENT	1
R32556	1/3	2.60	2/1075	REV.PLUG	5.10	6.0"x1/2"	7.5/370	BALL	U.E.556, FASCO D731, D737, KEEPRITE 121924, 161585	1
R22175	1/3	2.80	2/1075	REV.PLUG	5.00	6.0"x1/2"	7.5/370	SLEEVE	U.E. 175, 186	1
R22015	1/3	2.80	2/1075	REV.PLUG	4.80	6.0"x1/2"	7.5/370	SLEEVE	TRANE WW94X216, 256, 304, 305,325,WW94X335, 352, 354, 904	1
R31703	1/3	2.80	2/1075	REV.PLUG	5.10	6.0"x1/2"	7.5/370	BALL	GENERAL REPLACEMENT	1
R22603	1/2	2.40	2/825	REV.	4.80	6.0"x1/2"	12.5/370	BALL	MULTI HP 1/2 - 1/5	2
R22245	1/2	3.70	1/825	REV.PLUG	5.60	6.0"x1/2"	10/370	SLEEVE	FSE1058S, F48SR8L3	1
R22602	1/2	3.90	2/1075	REV.	4.80	5.0"x1/2"	12.5/370	BALL	GENERAL REPLACEMENT	2
CF-3734	1/2	3.50	1/1075	REV.	5.58	6.5"x1/2"	10/370	BALL	FSE1056S, SV1, FE1056S,SB, WG840730, 1862, 1878, D907, D7907, E223, 3730, 3734, X414, 187, 5578, R31705	1
R22140	1/2	2.70	2/1090	C.W.	5.00	3.4"x1/2"	7.5/370	SLEEVE	YORK 024-24110-701	3
R31705	1/2	3.50	2/1075	REV.PLUG	1.00	6.0"x1/2"	10/370	BALL	GENERAL REPLACEMENT	1
R22016	1/2	4.00	2/1075	REV.PLUG	5.20	6.0"x1/2"	10/370	SLEEVE	FASCO D717, YORK 24-17420-00024-70797-000, TRANE WW94X303,343	1
R22187	1/2	4.00	2/1075	REV.PLUG	5.20	6.0"x1/2"	10/370	SLEEVE	U.E. 187, FASCO D740	1
R32557	1/2	4.20	2/1075	REV.PLUG	5.50	6.0"x1/2"	10/370	BALL	KEEPRITE 155483, U.E. 557	1
R22460	1/2	4.20	2/1625	REV.PLUG	5.60	6.0"x1/2"	5/370	SLEEVE	GENERAL REPLACEMENT	1
R22604	3/4	5.30	2/1075	REV.	4.80	6.0"x1/2"	15/370	BALL	MULTI HP 3/4 - 1/4	2
CF-3735	3/4	5.10	1/1075	REV.	5.88	6.5"x1/2"	15/370	BALL	FSE1076S,SV1, FE1076, 1868, 1879, D931, 3731, 3735, X095, 779, 668, R31706	1
R31706	3/4	4.70	2/1075	REV.PLUG	5.60	6.5"x1/2"	12.5/370	BALL	GENERAL REPLACEMENT	1
R22168	3/4	5.20	2/1075	REV.PLUG	5.60	6.5"x1/2"	15/370	SLEEVE	GENERAL REPLACEMENT	1

Rotation determined opposite shaft end
Double shaft determined at lead end

Shaft length measured from hub
face to shaft end

www.rotom.ca