



Fig. 1

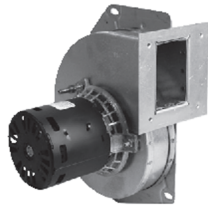


Fig. 2

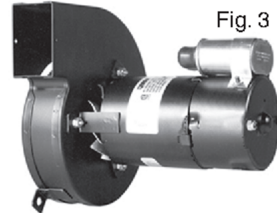


Fig. 3



Fig. 4



Fig. 5



Fig. 6



Fig. 7



Fig. 8

## Lennox (cont. from previous page...)

Part #	HP	Volts	Amps	Type	RPM	Rot.	Body	Frame	Bearing	Cap	Shaft	Cross	Fig
<b>FB-RFB547<sup>-1</sup></b>	<b>1/20</b>	115	1.8	SP	1/3400	CW	5.8"	3.3"	Ball	-	-	G26 High Eff. Series Res: 68K21, Fasco 7021-9450	1
<b>FB-RFB550</b>	<b>1/16</b>	230	0.83	SP	1/3000	CW	5.50"	3.3"	Ball	-	-	Com: 25M5501, 7021-11231, A217	2
<b>FB-RFB811</b>	<b>1/15</b>	115	2.35	SP	1/3400	CCW	6.0"	3.3"	Ball	-	-	Res: 81M1601, 7021-11634, A211	3
<b>FB-RFB101<sup>-2</sup></b>	<b>1/12</b>	208/230	0.5	PSC	1/3200	CW	8.80"	3.3"	Ball	3/370	-	GCS Roof Top Com: Lennox 23G8101, 135327, 074, 28G6601, Fasco 7062-1794, 7062-3577	4
<b>FB-RFB701</b>	<b>1/10</b>	208/230	0.6	PSC	1/3200	CCW	6.80"	3.3"	Ball	4/370	-	Roof Top Com: Lennox 98G8701	5
<b>FB-RFB320</b>	<b>1/10</b>	460	.38/.33	PSC	1/3200	CCW	6.75"	3.3"	Sleeve	4/370	-	Com: 69M3201, 7062-5554, 7062-4051, 7062-4518, 97J8101	6

## Modine

Part #	HP	Volts	Amps	Type	RPM	Rot.	Body	Frame	Bearing	Cap	Shaft	Cross	Fig
<b>FB-RFB599</b>	<b>1/15</b>	115	2.4	SP	1/3000	CW	8.75"	3.3"	Sleeve	-	-	5H073598-001, 7021-9045, 7021-12659	7
<b>FB-RFB598</b>	<b>1/15</b>	200/230	.95/1.1	SP	1/3000	CW	8.50"	3.3"	Sleeve	-	-	5H73598-2	7

## Newmac

Part #	HP	Volts	Amps	Type	RPM	Rot.	Body	Frame	Bearing	Cap	Shaft	Comments	Fig
<b>R7-RB33<sup>-3</sup></b>	<b>1/55</b>	115	0.88	SP	1/3200	CW	6.6"	3.3"	Sleeve	-	-	Oil & Wood Furnace 2040001	8

\*Notes:

- 1 - Comes with gasket set
- 2 - Comes with gasket. Built-in centrifugal switch
- 3 - Features a built-in variable speed control